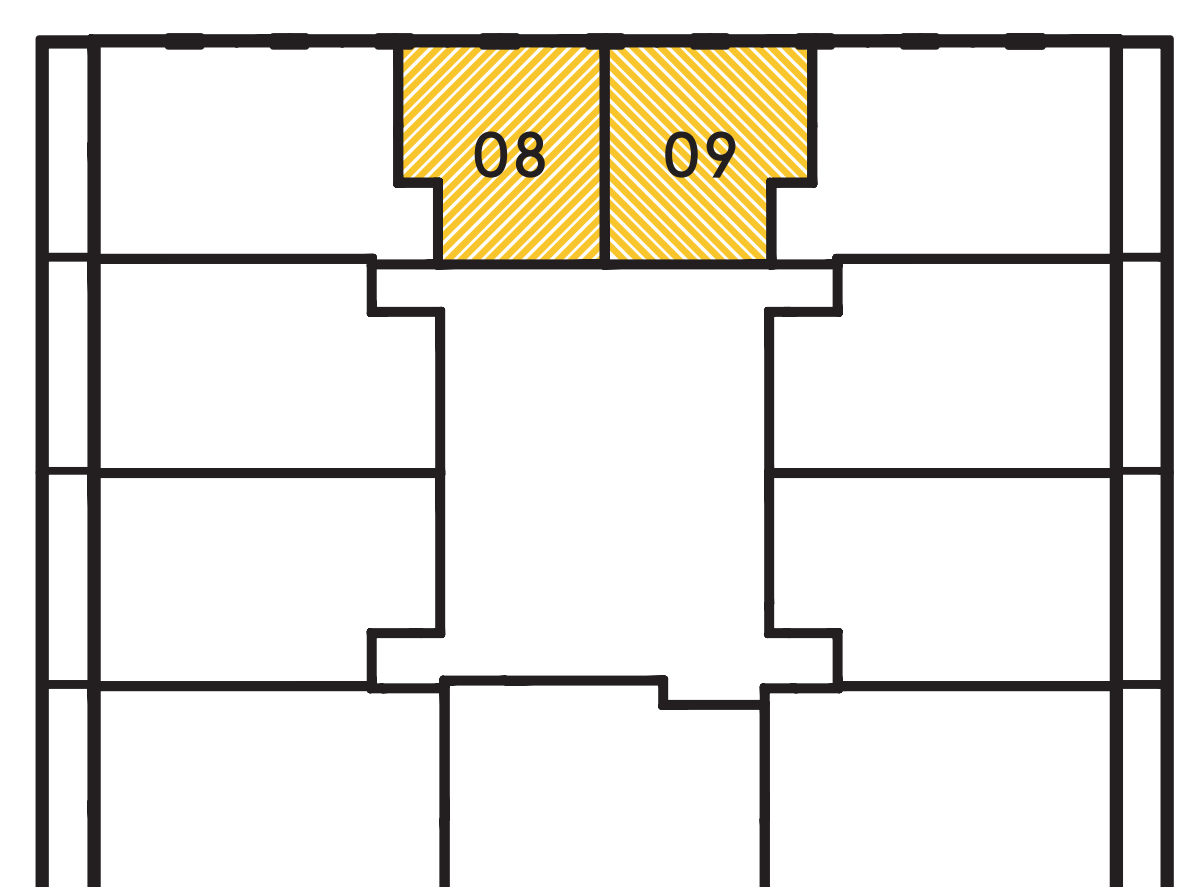
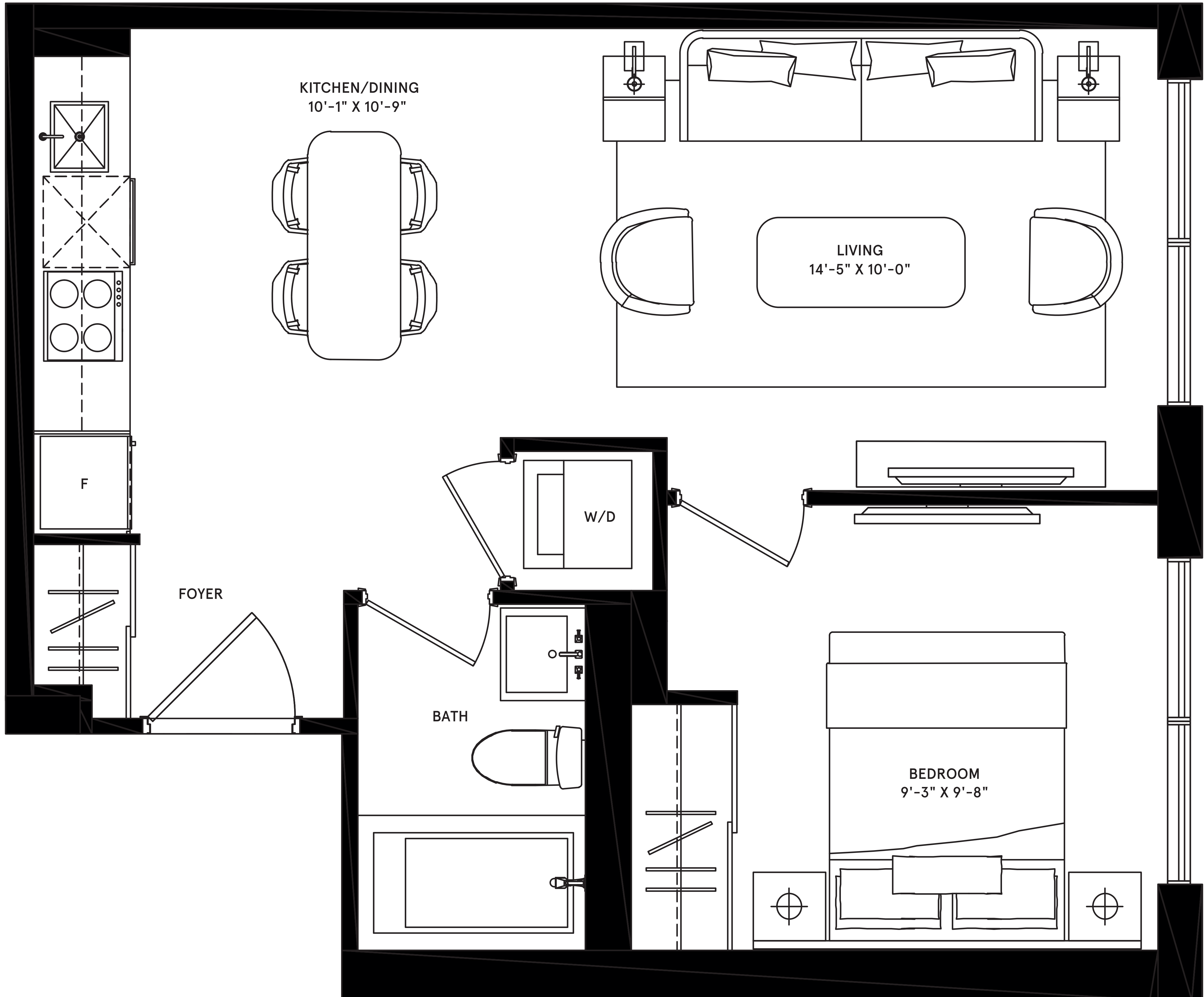
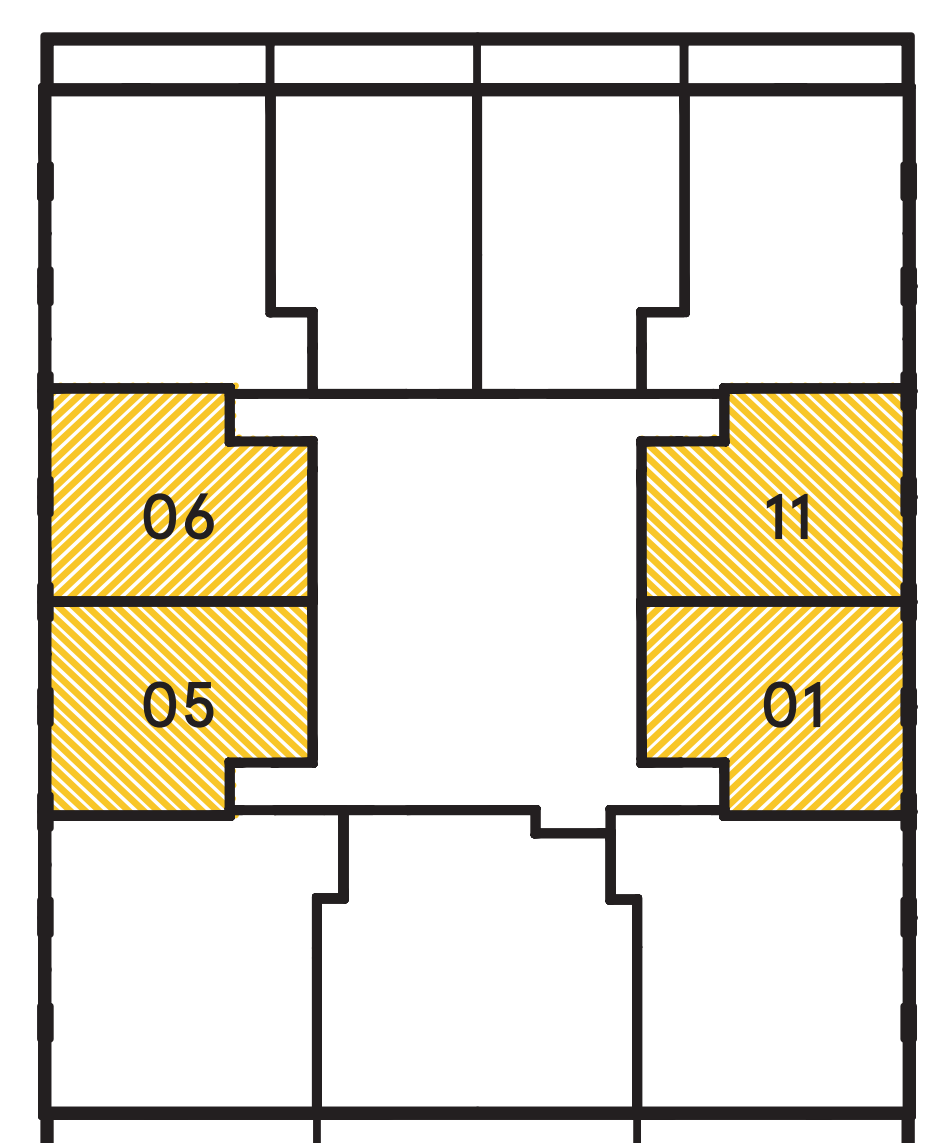


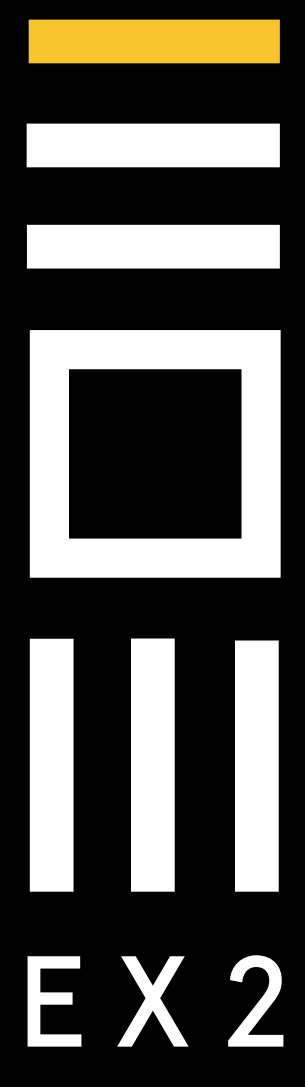
NORTH
LOWER - TYPICAL





NORTH
UPPER - TYPICAL

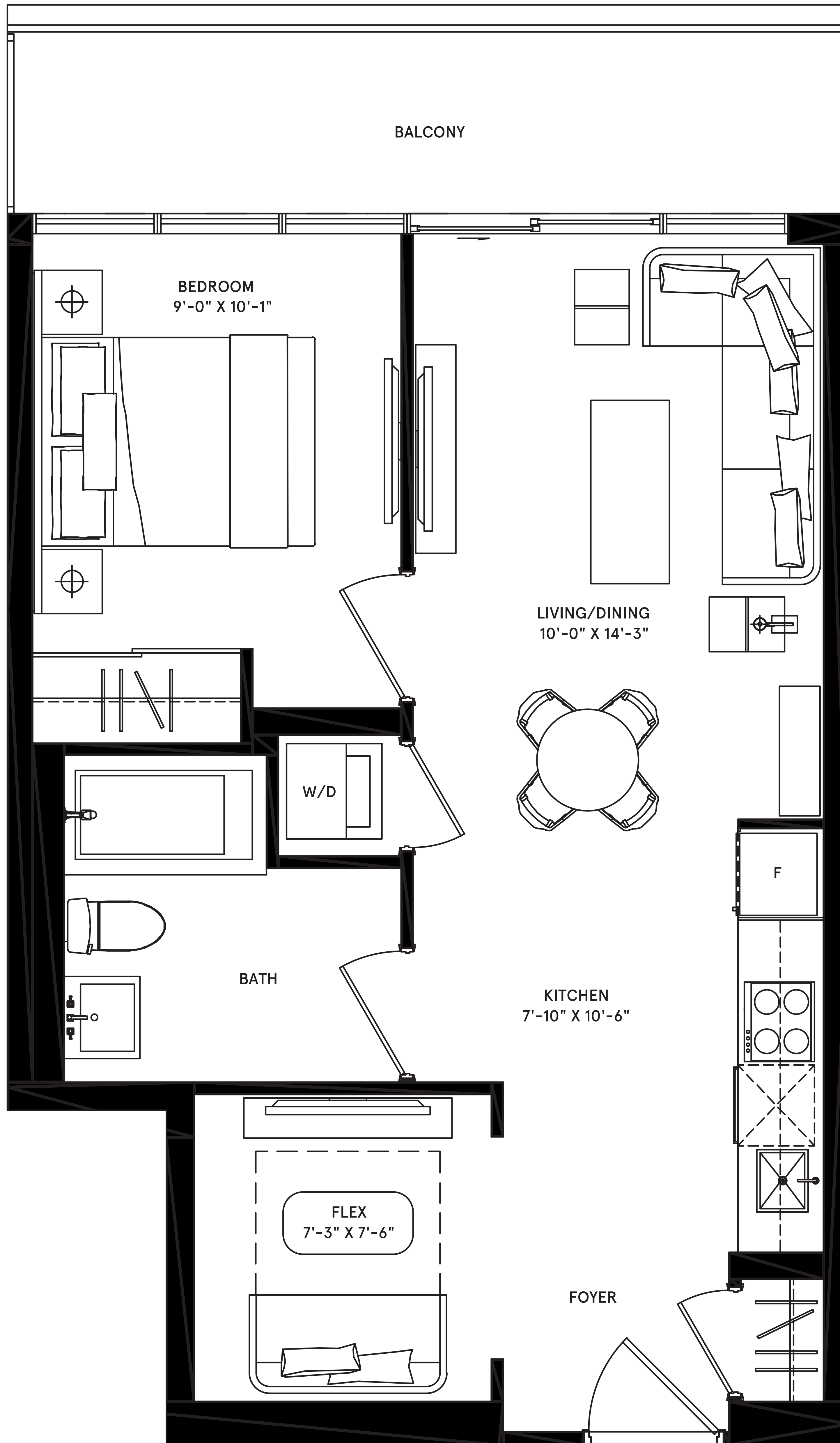




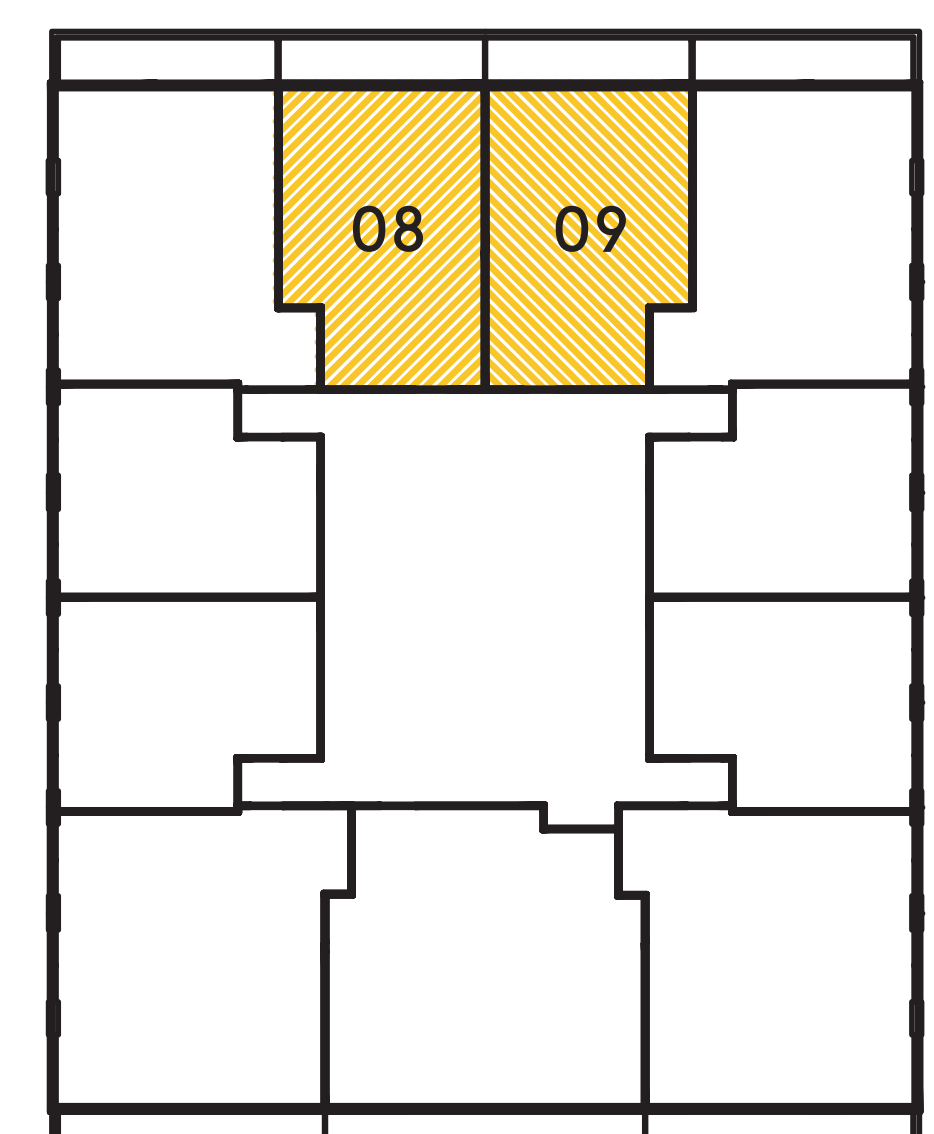
hanoi

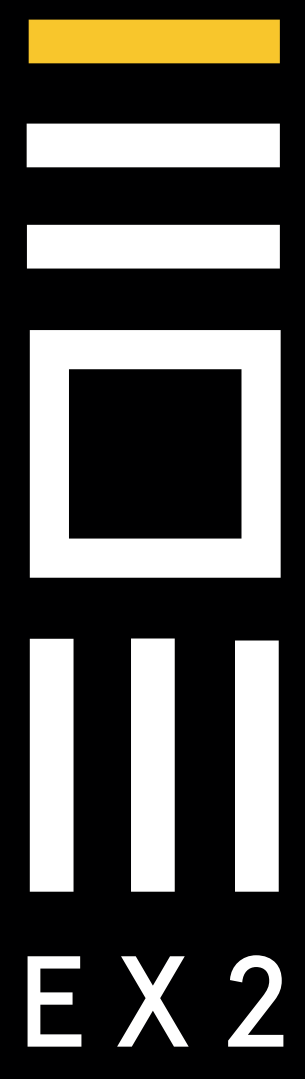
1 BEDROOM + FLEX
total: 673 sq.ft.

interior: 575 sq.ft.
exterior: 98 sq.ft.



NORTH
UPPER - TYPICAL

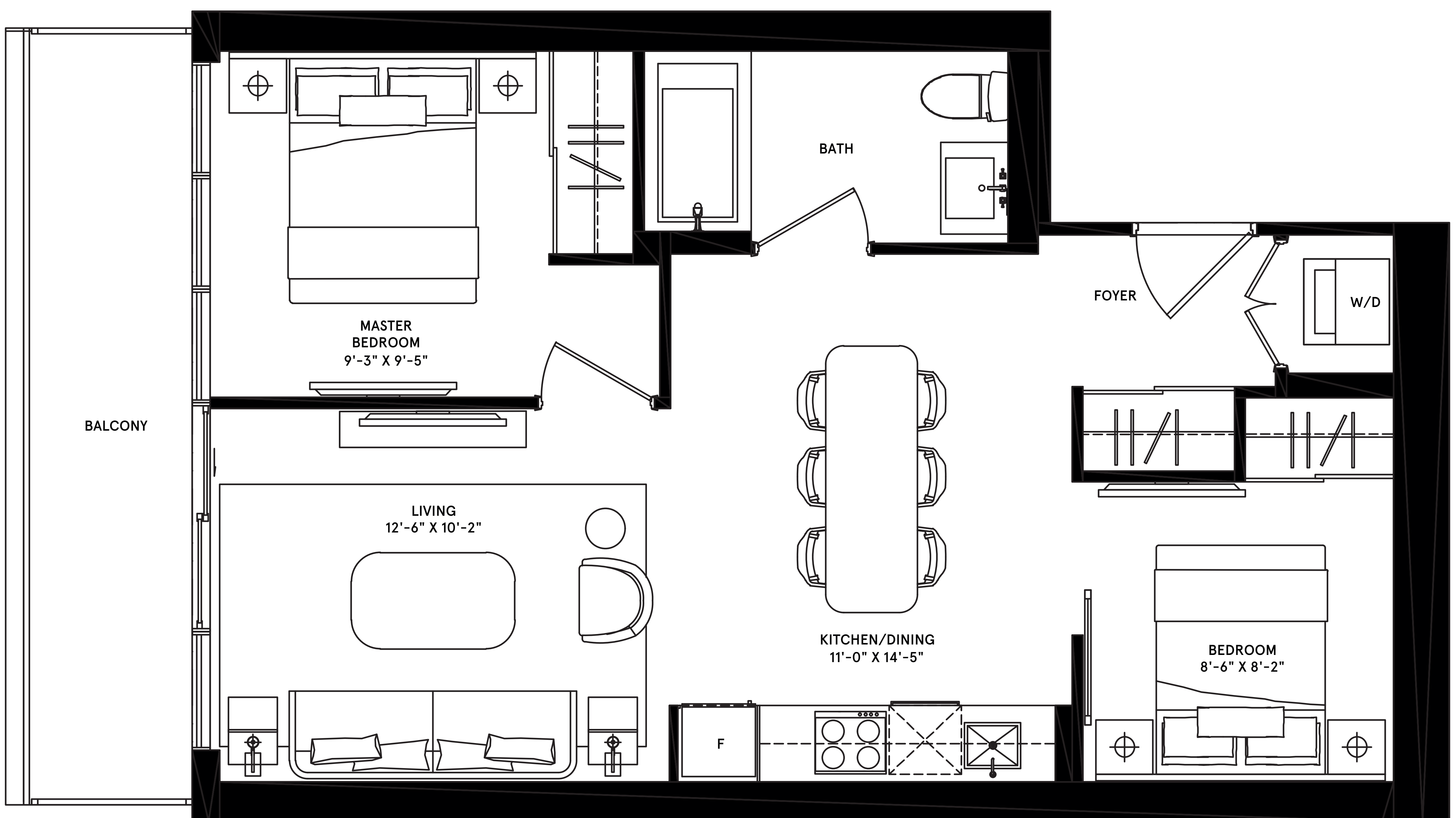




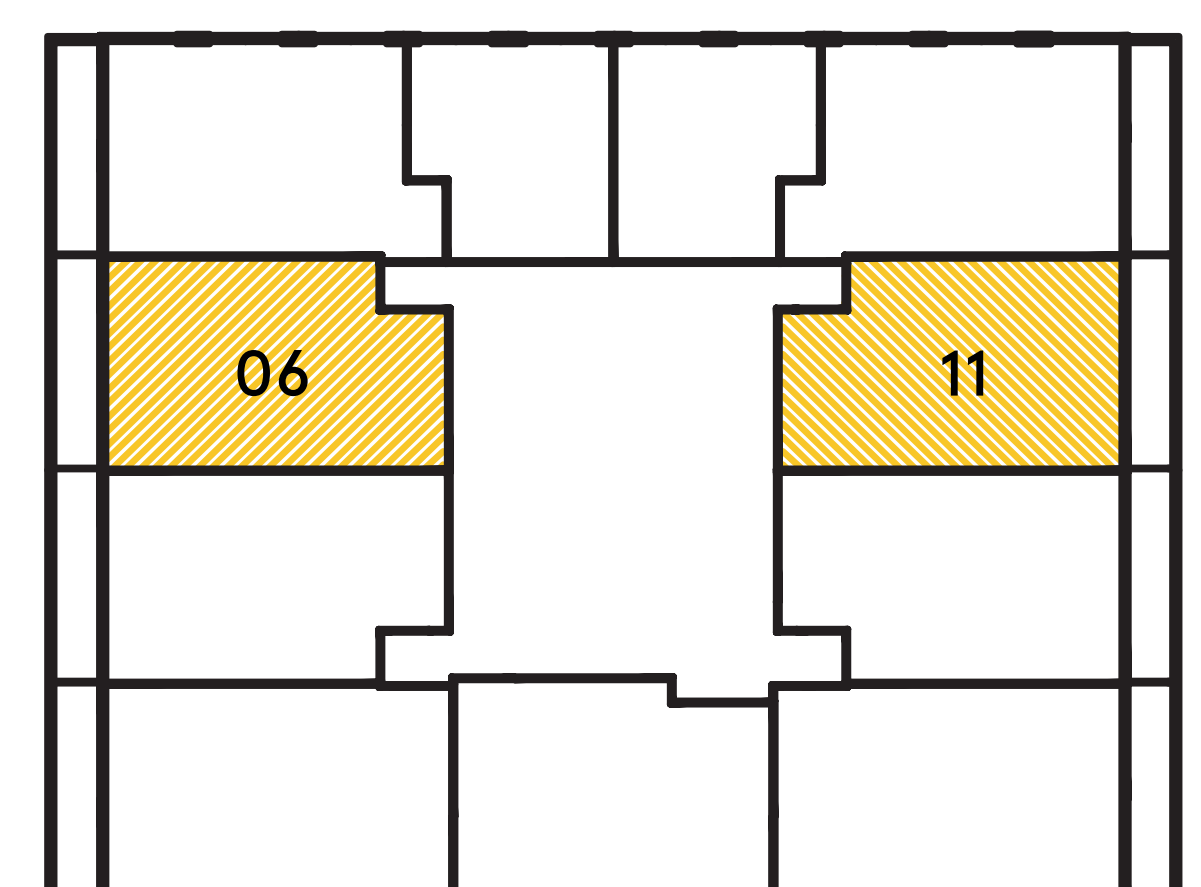
oxford

2 BEDROOM
total: 761 sq.ft.

interior: 665 sq.ft.
exterior: 96 sq.ft.

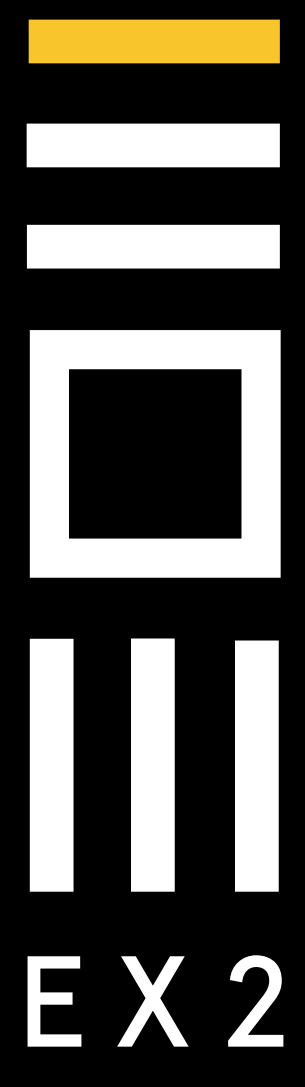


NORTH
LOWER - TYPICAL



**CAMROST
FELCORP.**
EST 1976
Building Excellence

Dimensions, specifications, layouts (including but not limited to tile patterns), window sizes, mullions, fixture representation, appliance and fixture locations, and materials are approximate only, may vary, and are subject to changes without notice as provided in the Agreement of Purchase and Sale. Plans may be reversed. Wall thickness will vary with floor levels reducing room dimensions accordingly. Actual usable floor space may vary from the stated floor area. Measurements of rooms set forth on any floor plan are generally taken at the greatest points of each given room and centre line of windows (as if the room were perfectly rectangular). Furniture is not included. Furniture shown on terrace spaces should be secured for safety. Prices are subject to change without notice. E. & O. E. Plans are not to scale. For more information on the method used for calculating floor area of any unit, reference should be made to Builder Bulletin NO. 22 published by Tarion.



milan

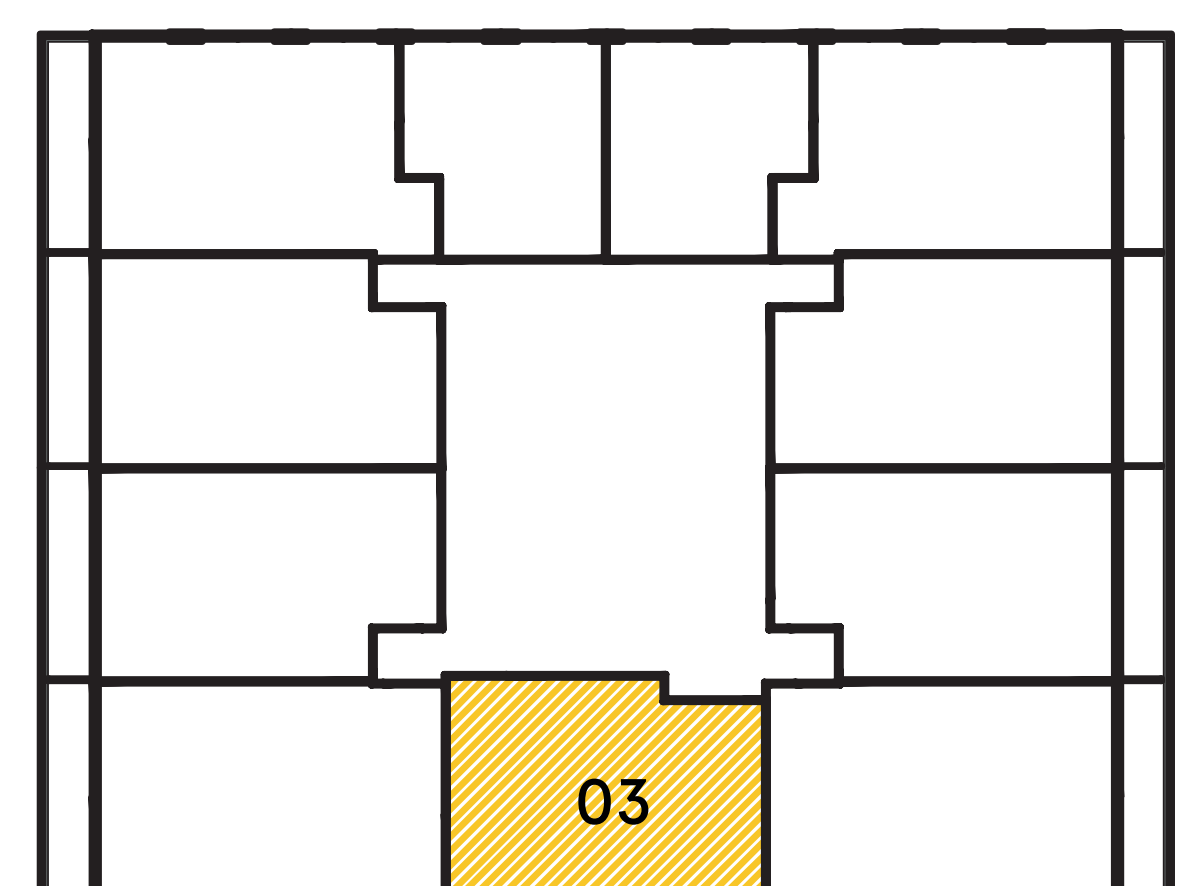
2 BEDROOM

total: 675 sq.ft.



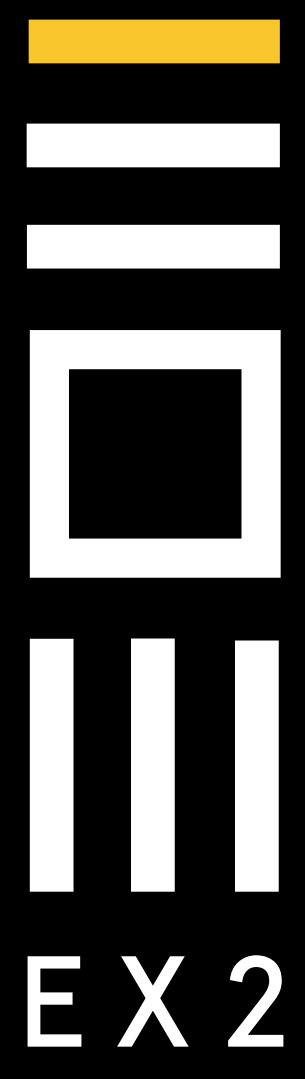
NORTH

LOWER - TYPICAL



**CAMROST
FELCORP.**
EST 1976
Building Excellence

Dimensions, specifications, layouts (including but not limited to tile patterns), window sizes, mullions, fixture representation, appliance and fixture locations, and materials are approximate only, may vary, and are subject to changes without notice as provided in the Agreement of Purchase and Sale. Plans may be reversed. Wall thickness will vary with floor levels reducing room dimensions accordingly. Actual usable floor space may vary from the stated floor area. Measurements of rooms set forth on any floor plan are generally taken at the greatest points of each given room and centre line of windows (as if the room were perfectly rectangular). Furniture is not included. Furniture shown on terrace spaces should be secured for safety. Prices are subject to change without notice. E. & O. E. Plans are not to scale. For more information on the method used for calculating floor area of any unit, reference should be made to Builder Bulletin NO. 22 published by Tarion.



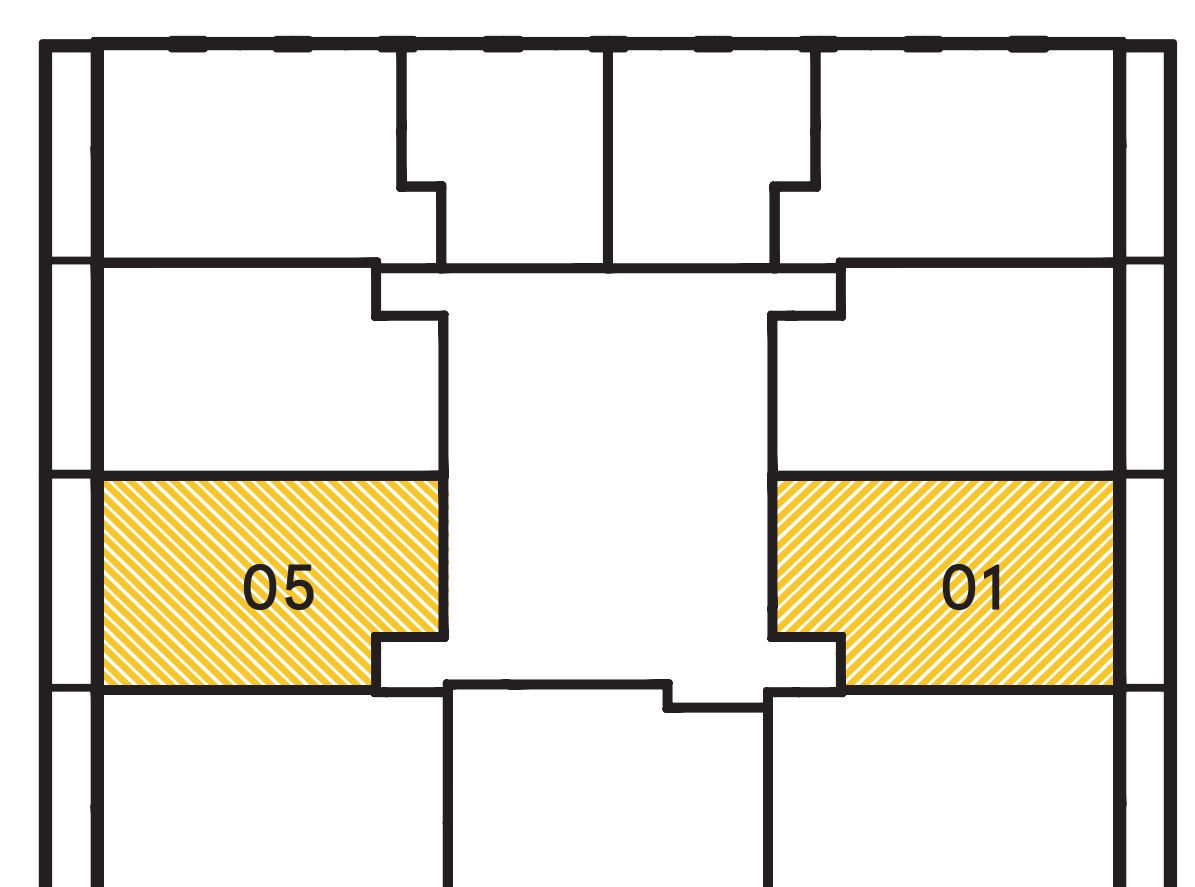
melbourne

2 BEDROOM
total: 781 sq.ft.

interior: 685 sq.ft.
exterior: 96 sq.ft.

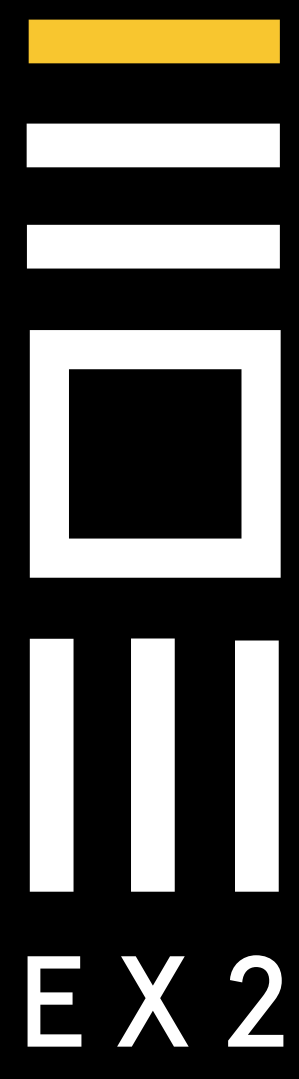


NORTH
LOWER - TYPICAL



**CAMROST
FELCORP.**
EST 1976
Building Excellence

Dimensions, specifications, layouts (including but not limited to tile patterns), window sizes, mullions, fixture representation, appliance and fixture locations, and materials are approximate only, may vary, and are subject to changes without notice as provided in the Agreement of Purchase and Sale. Plans may be reversed. Wall thickness will vary with floor levels reducing room dimensions accordingly. Actual usable floor space may vary from the stated floor area. Measurements of rooms set forth on any floor plan are generally taken at the greatest points of each given room and centre line of windows (as if the room were perfectly rectangular). Furniture is not included. Furniture shown on terrace spaces should be secured for safety. Prices are subject to change without notice. E. & O. E. Plans are not to scale. For more information on the method used for calculating floor area of any unit, reference should be made to Builder Bulletin NO. 22 published by Tarion.

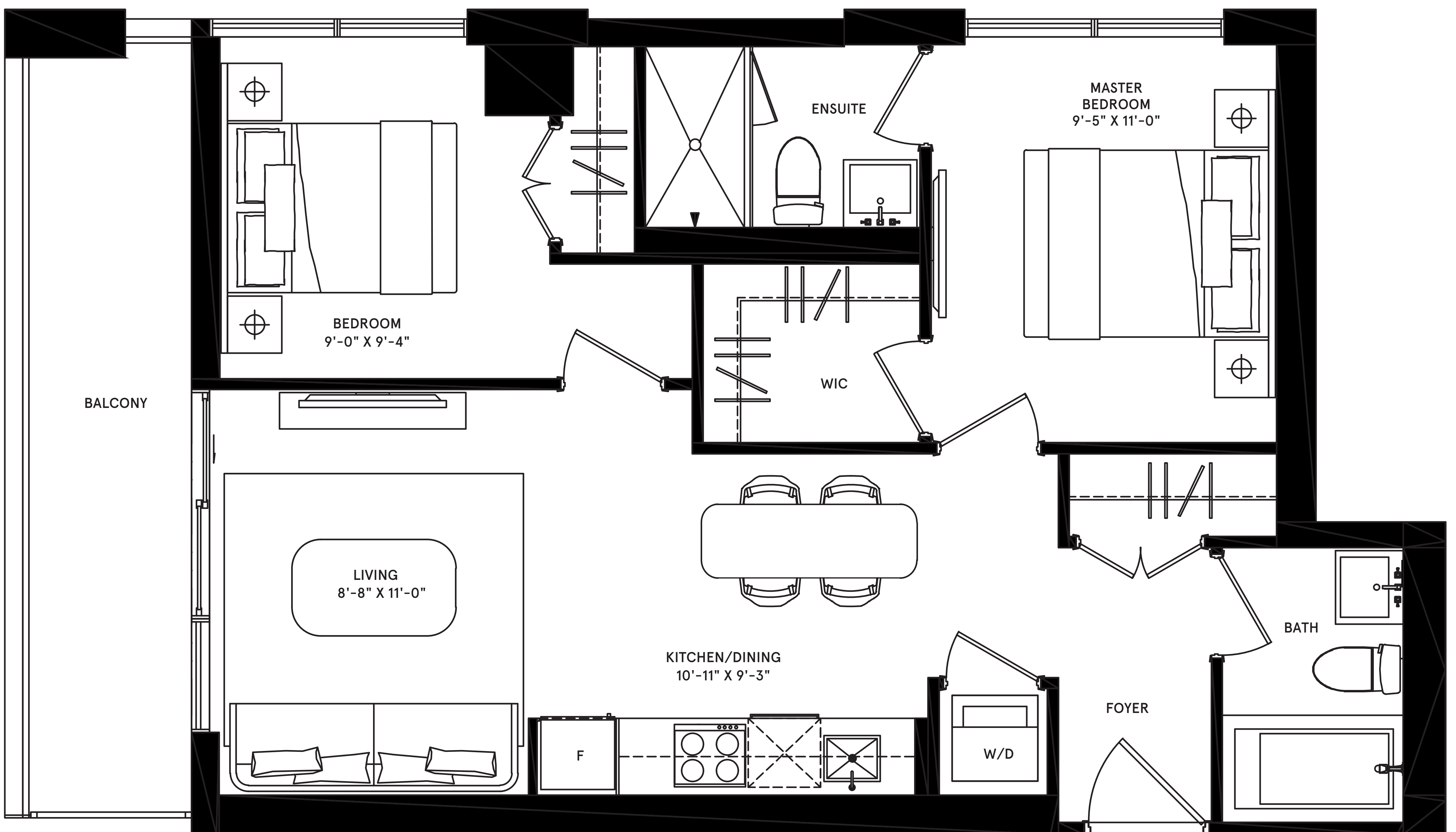


EX 2

shanghai

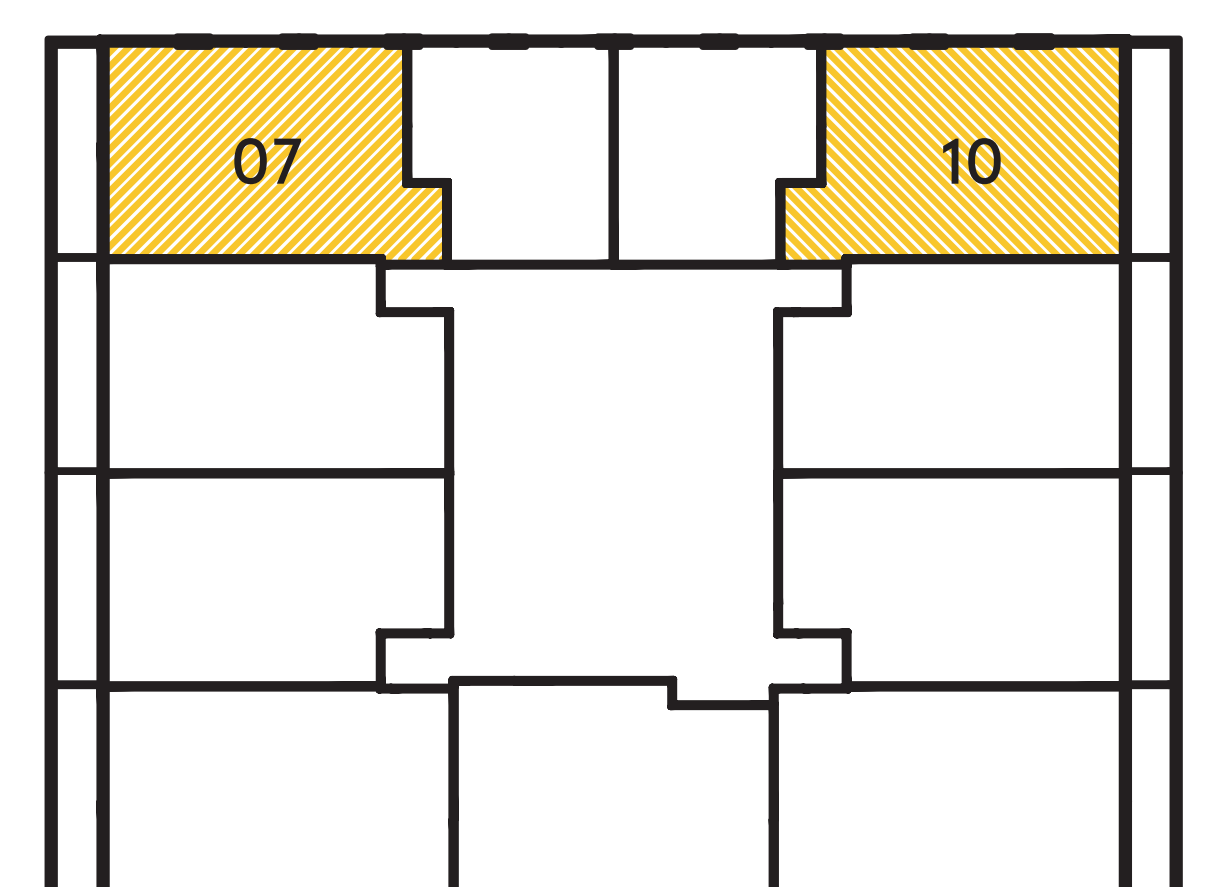
2 BEDROOM
total: 786 sq.ft.

interior: 690 sq.ft.
exterior: 96 sq.ft.



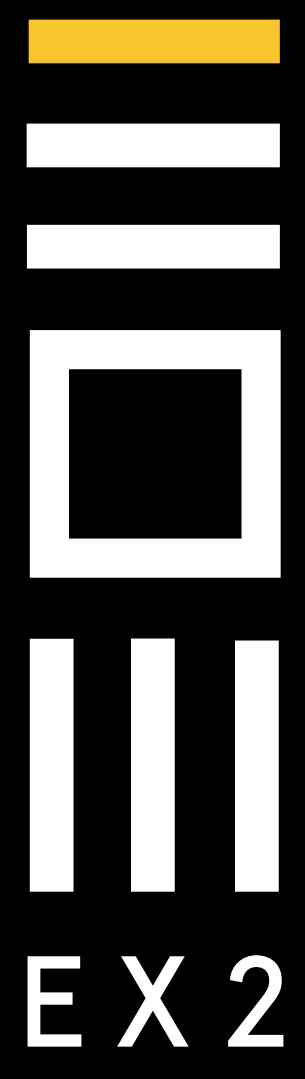
NORTH

LOWER - TYPICAL



**CAMROST
FELCORP.**
EST 1976
Building Excellence

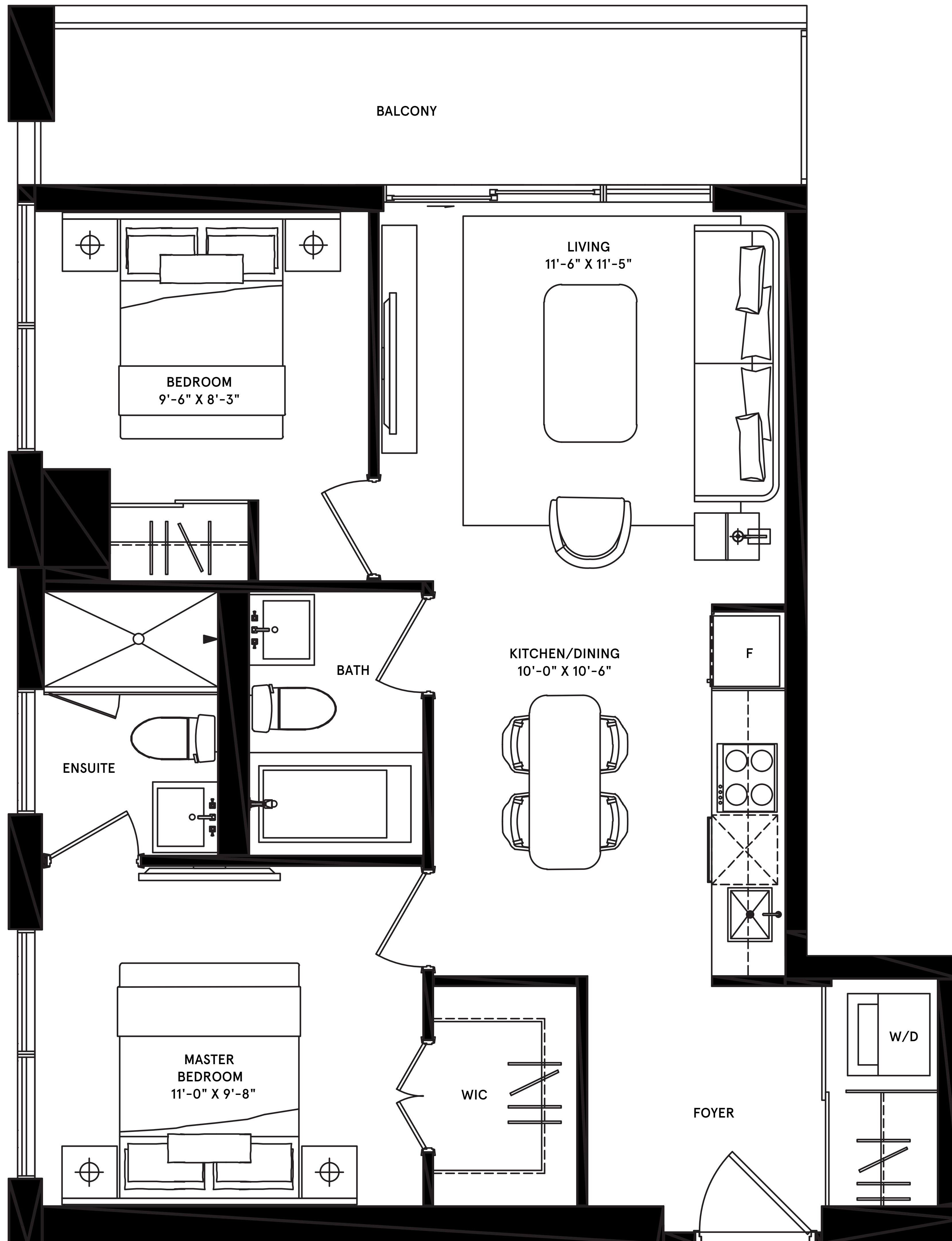
Dimensions, specifications, layouts (including but not limited to tile patterns), window sizes, mullions, fixture representation, appliance and fixture locations, and materials are approximate only, may vary, and are subject to changes without notice as provided in the Agreement of Purchase and Sale. Plans may be reversed. Wall thickness will vary with floor levels reducing room dimensions accordingly. Actual usable floor space may vary from the stated floor area. Measurements of rooms set forth on any floor plan are generally taken at the greatest points of each given room and centre line of windows (as if the room were perfectly rectangular). Furniture is not included. Furniture shown on terrace spaces should be secured for safety. Prices are subject to change without notice. E. & O. E. Plans are not to scale. For more information on the method used for calculating floor area of any unit, reference should be made to Builder Bulletin NO. 22 published by Tarion.



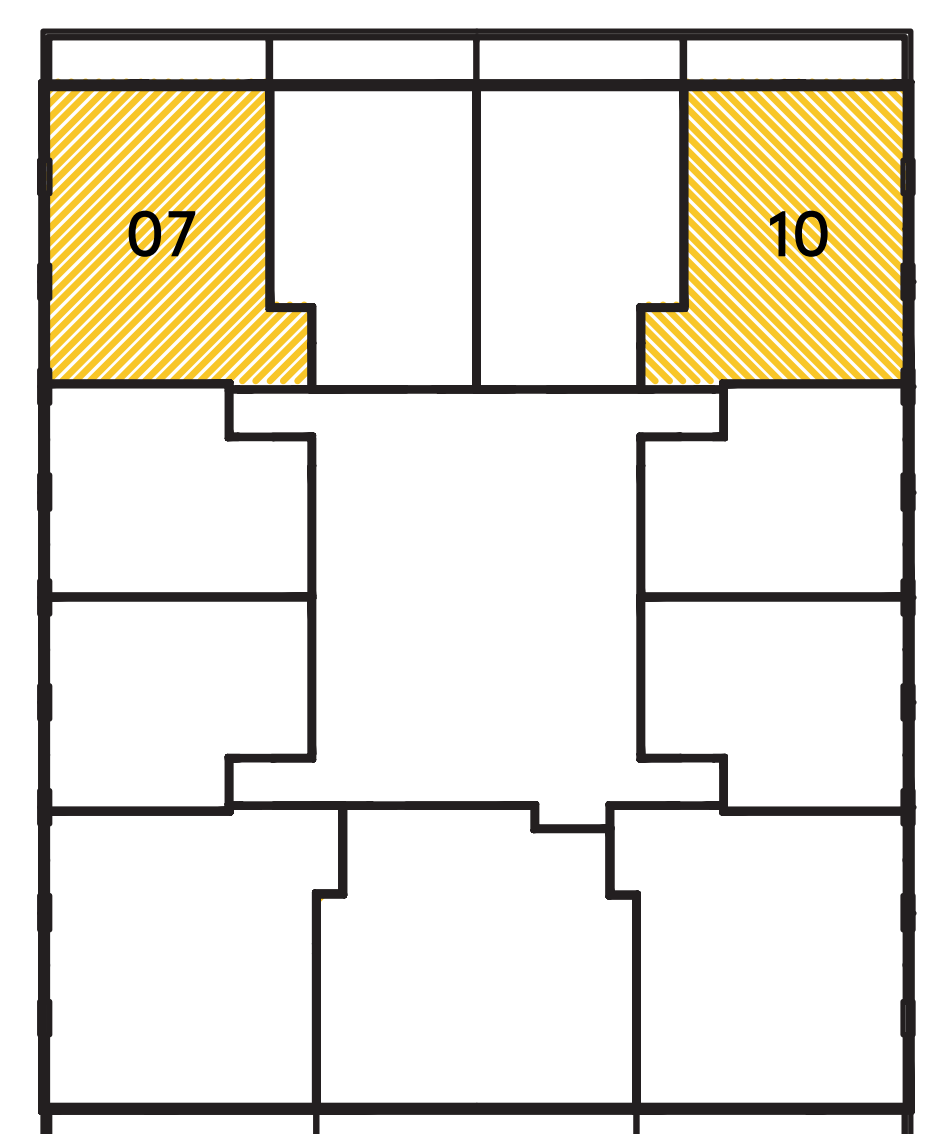
porto

2 BEDROOM
total: 801 sq.ft.

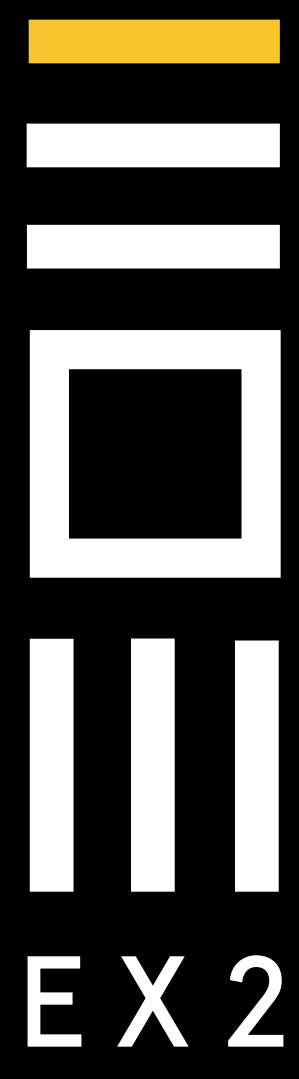
interior: 695 sq.ft.
exterior: 106 sq.ft.



NORTH
UPPER - TYPICAL



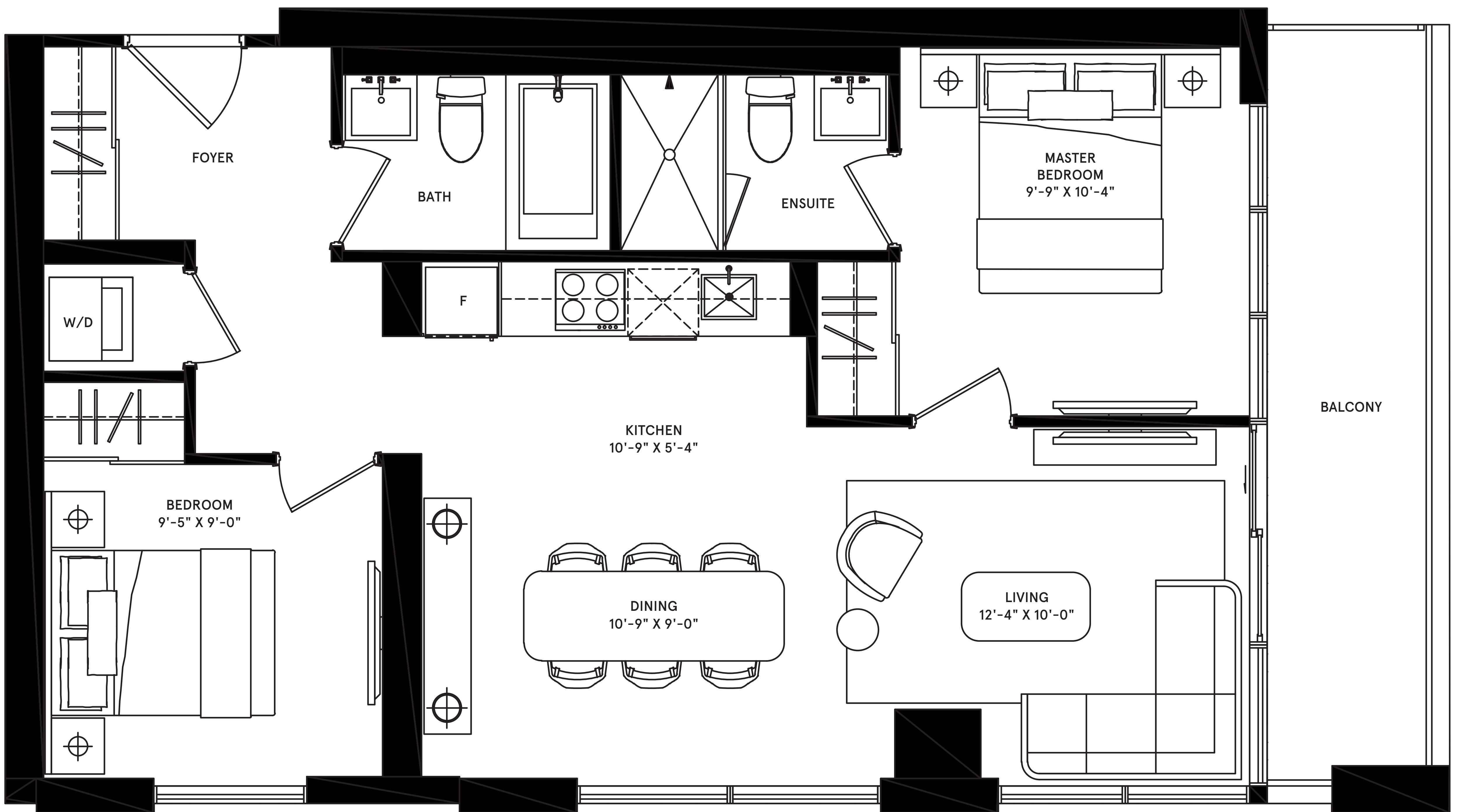
Dimensions, specifications, layouts (including but not limited to tile patterns), window sizes, mullions, fixture representation, appliance and fixture locations, and materials are approximate only, may vary, and are subject to changes without notice as provided in the Agreement of Purchase and Sale. Plans may be reversed. Wall thickness will vary with floor levels reducing room dimensions accordingly. Actual usable floor space may vary from the stated floor area. Measurements of rooms set forth on any floor plan are generally taken at the greatest points of each given room and centre line of windows (as if the room were perfectly rectangular). Furniture is not included. Furniture shown on terrace spaces should be secured for safety. Prices are subject to change without notice. E. & O. E. Plans are not to scale. For more information on the method used for calculating floor area of any unit, reference should be made to Builder Bulletin NO. 22 published by Tarion.



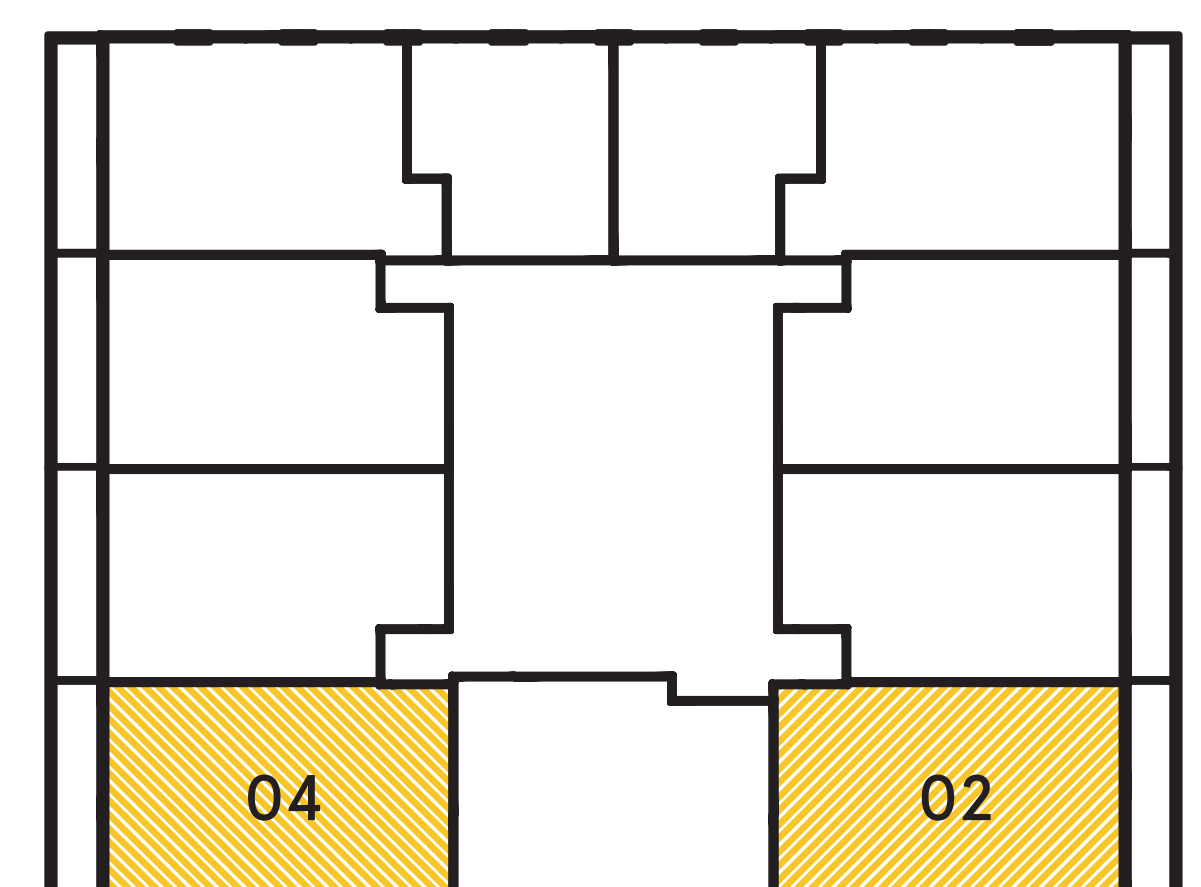
munich

2 BEDROOM
total: 845 sq.ft.

interior: 749 sq.ft.
exterior: 96 sq.ft.

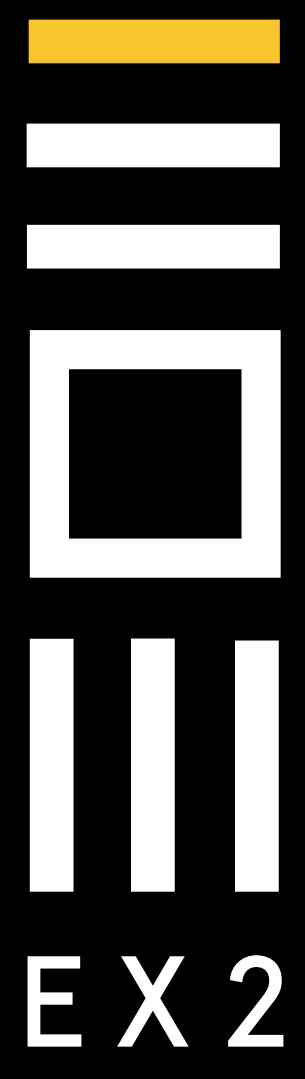


NORTH
LOWER - TYPICAL



**CAMROST
FELCORP.**
EST 1976
Building Excellence

Dimensions, specifications, layouts (including but not limited to tile patterns), window sizes, mullions, fixture representation, appliance and fixture locations, and materials are approximate only, may vary, and are subject to changes without notice as provided in the Agreement of Purchase and Sale. Plans may be reversed. Wall thickness will vary with floor levels reducing room dimensions accordingly. Actual usable floor space may vary from the stated floor area. Measurements of rooms set forth on any floor plan are generally taken at the greatest points of each given room and centre line of windows (as if the room were perfectly rectangular). Furniture is not included. Furniture shown on terrace spaces should be secured for safety. Prices are subject to change without notice. E. & O. E. Plans are not to scale. For more information on the method used for calculating floor area of any unit, reference should be made to Builder Bulletin NO. 22 published by Tarion.



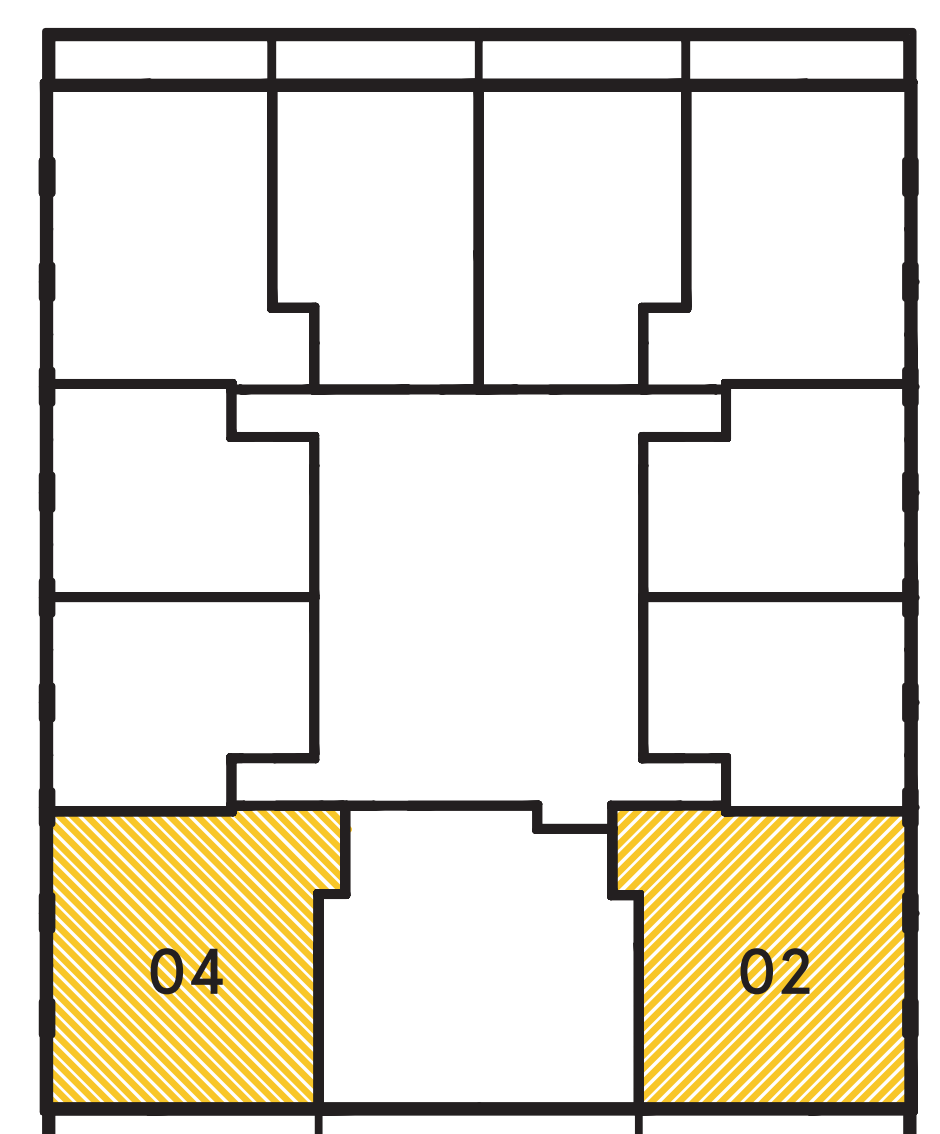
manila

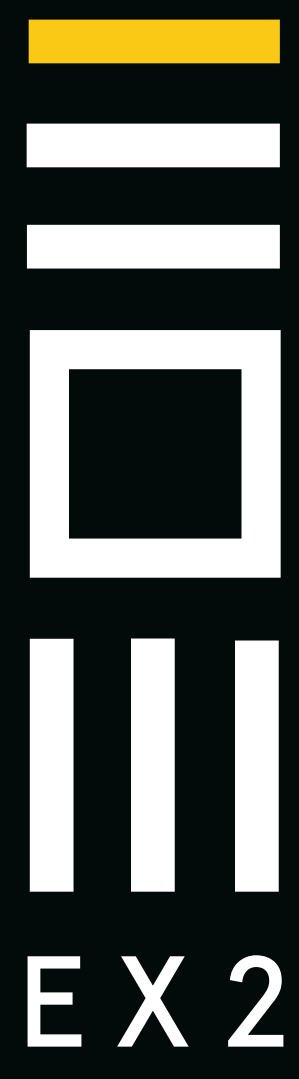
2 BEDROOM
total: 949 sq.ft.

interior: 820 sq.ft.
exterior: 129 sq.ft.



NORTH
UPPER - TYPICAL

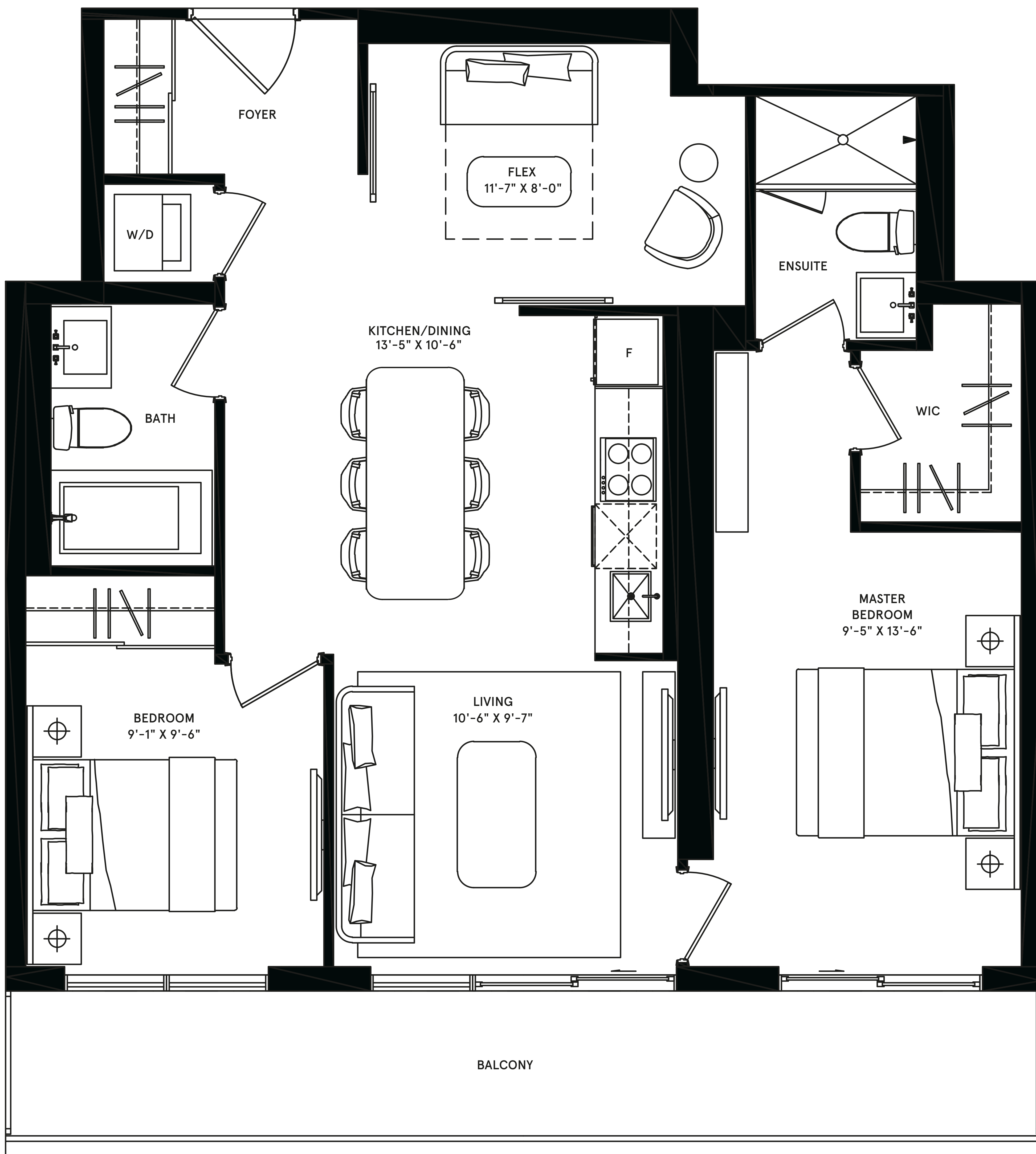




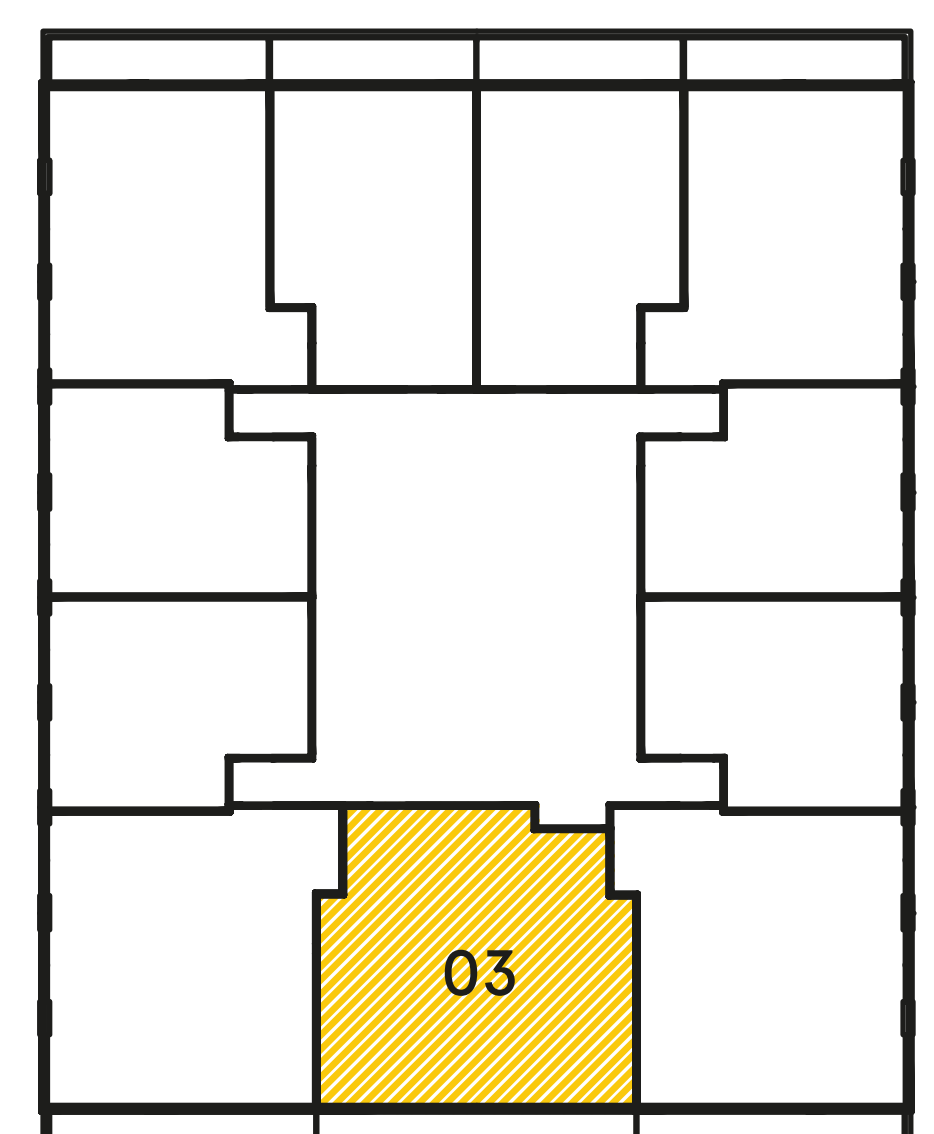
chicago

2 BEDROOM + FLEX
total: 1,037 sq.ft.

interior: 885 sq.ft.
exterior: 152 sq.ft.



UPPER - TYPICAL



Dimensions, specifications, layouts (including but not limited to tile patterns), window sizes, mullions, fixture representation, appliance and fixture locations, and materials are approximate only, may vary, and are subject to changes without notice as provided in the Agreement of Purchase and Sale. Plans may be reversed. Wall thickness will vary with floor levels reducing room dimensions accordingly. Actual usable floor space may vary from the stated floor area. Measurements of rooms set forth on any floor plan are generally taken at the greatest points of each given room and centre line of windows (as if the room were perfectly rectangular). Furniture is not included. Furniture shown on terrace spaces should be secured for safety. Prices are subject to change without notice. E. & O.E. Plans are not to scale. For more information on the method used for calculating floor area of any unit, reference should be made to Builder Bulletin NO. 22 published by Tarion.