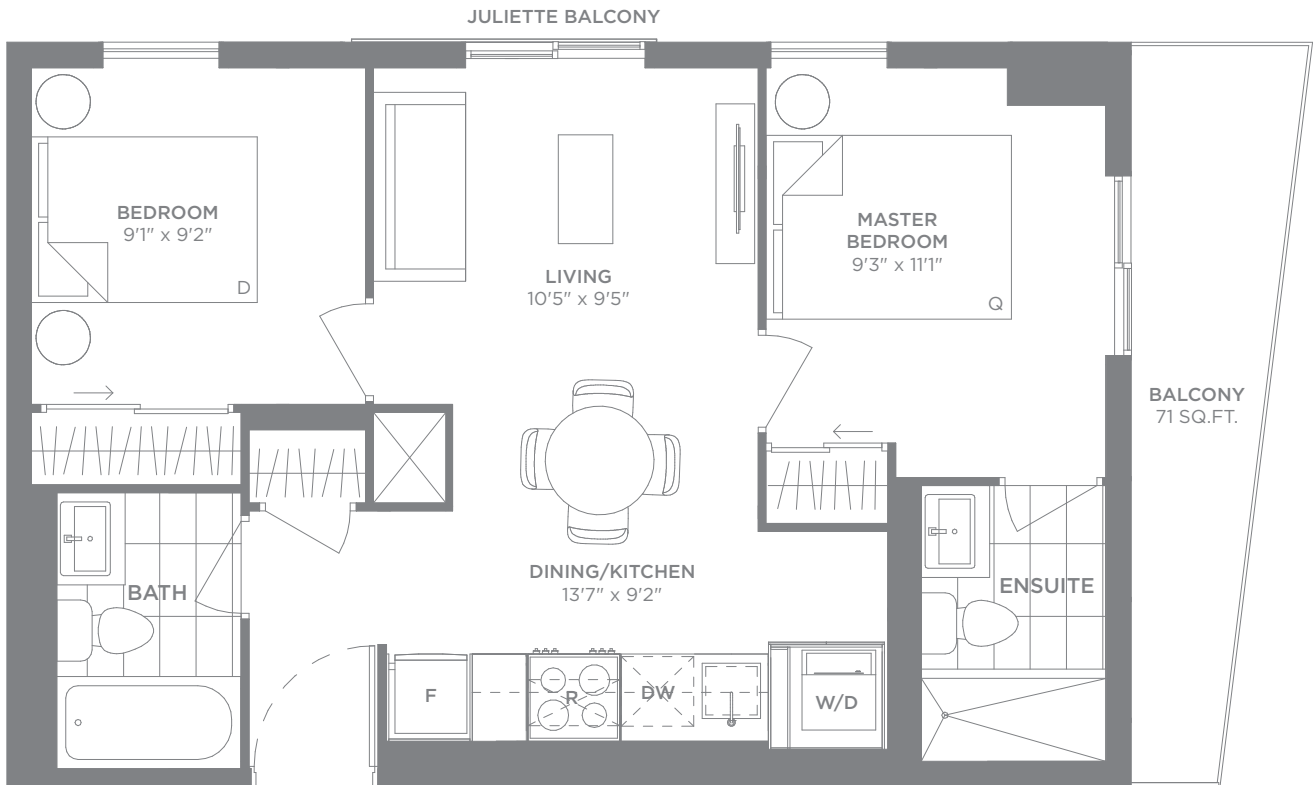


TRETTI

CONDOS

2 Bedroom - E2

602 SQ.FT.



LEVEL 2-7

Materials, specifications and floorplans are subject to change without notice. All renderings are artists' conception. All floorplans have approximate dimensions. Actual useable floor space may vary from the stated floor area. E. & O.E. Balcony depths vary depending on floor level locations.

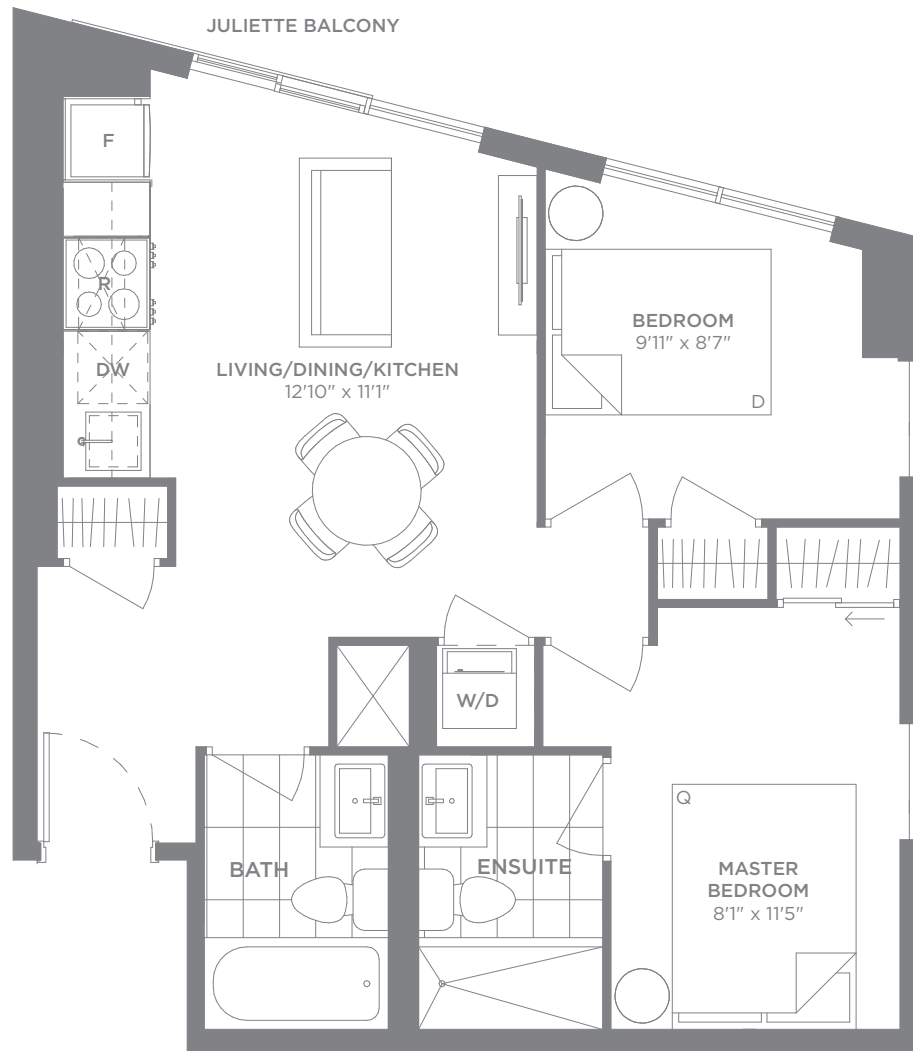


TRETTI

C O N D O S

2 Bedroom - E3

586 SQ.FT.



LEVEL 2-7

Materials, specifications and floorplans are subject to change without notice. All renderings are artists' conception. All floorplans have approximate dimensions. Actual useable floor space may vary from the stated floor area. E. & O.E. Balcony depths vary depending on floor level locations.

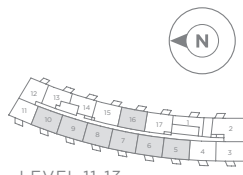
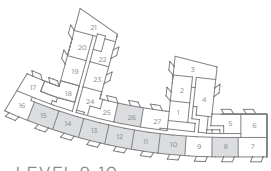
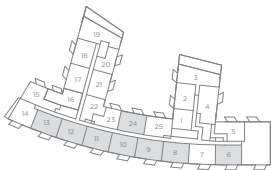
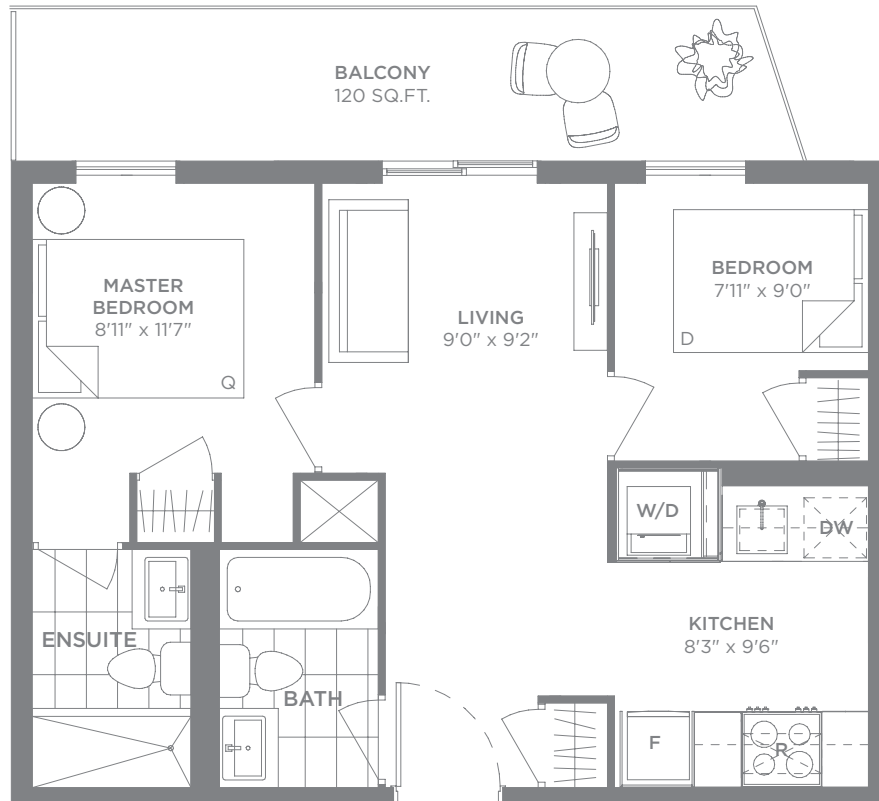
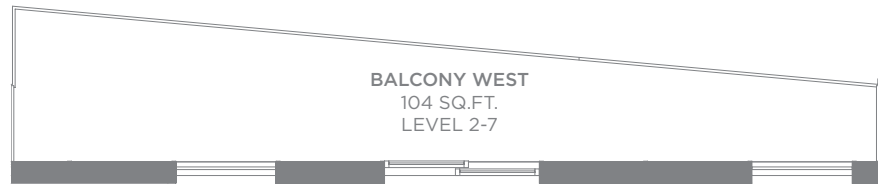


TRETTI

CONDOS

2 Bedroom - E15

553 SQ.FT.



Materials, specifications and floorplans are subject to change without notice. All renderings are artists' conception. All floorplans have approximate dimensions. Actual useable floor space may vary from the stated floor area. E. & O.E. Balcony depths vary depending on floor level locations.

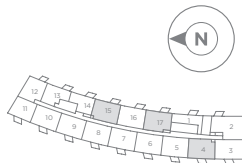
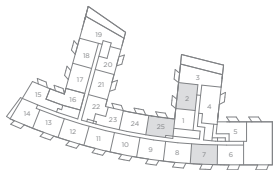
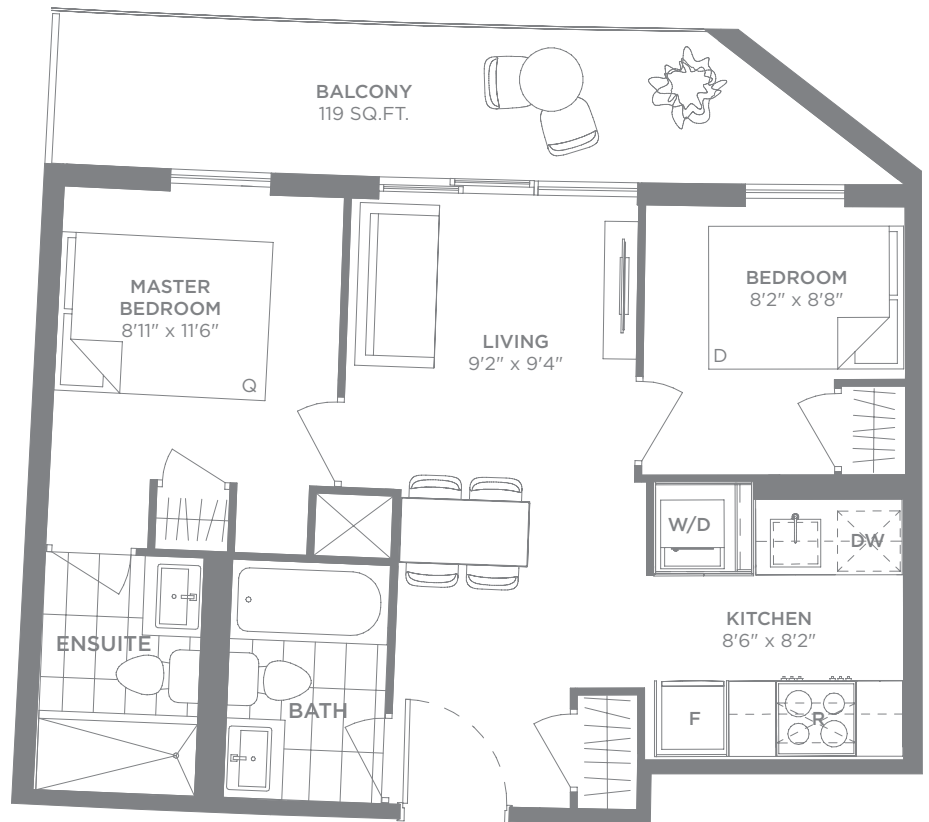
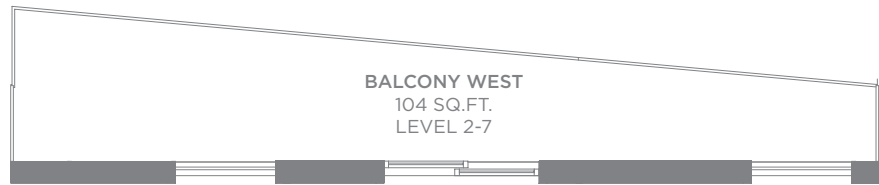


TRETTI

CONDOS

2 Bedroom - E15-A

549 SQ.FT.



Materials, specifications and floorplans are subject to change without notice. All renderings are artists' conception. All floorplans have approximate dimensions. Actual useable floor space may vary from the stated floor area. E. & O.E. Balcony depths vary depending on floor level locations.

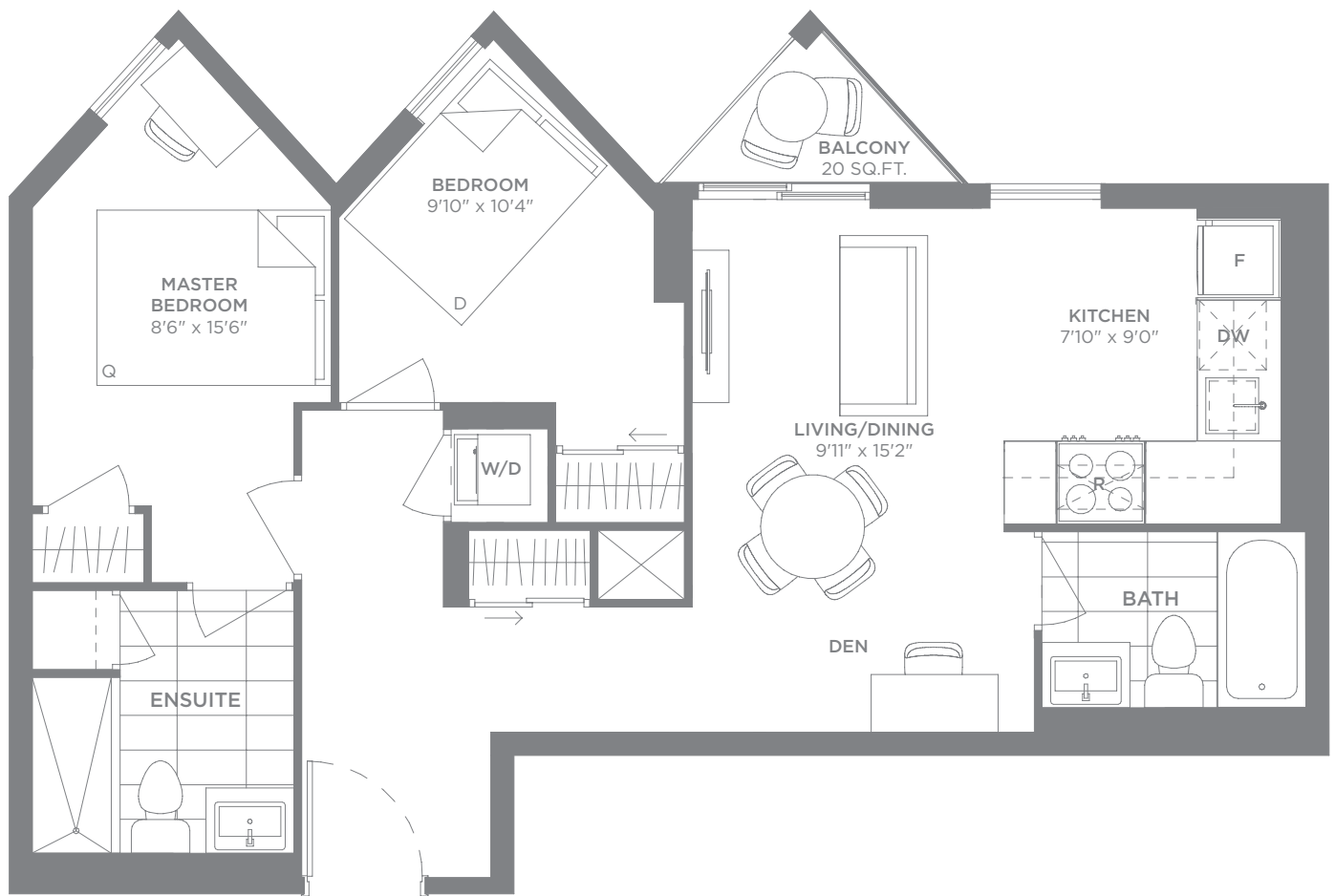


TRETTI

CONDOS

2 Bedroom + Den - F1

700 SQ.FT.



LEVEL 2-7

Materials, specifications and floorplans are subject to change without notice. All renderings are artists' conception. All floorplans have approximate dimensions. Actual useable floor space may vary from the stated floor area. E. & O.E. Balcony depths vary depending on floor level locations.

